



# *Aortic translocation (Nikaidoh type) in patients with coronary anomaly*

*Tomasz Mroczek*

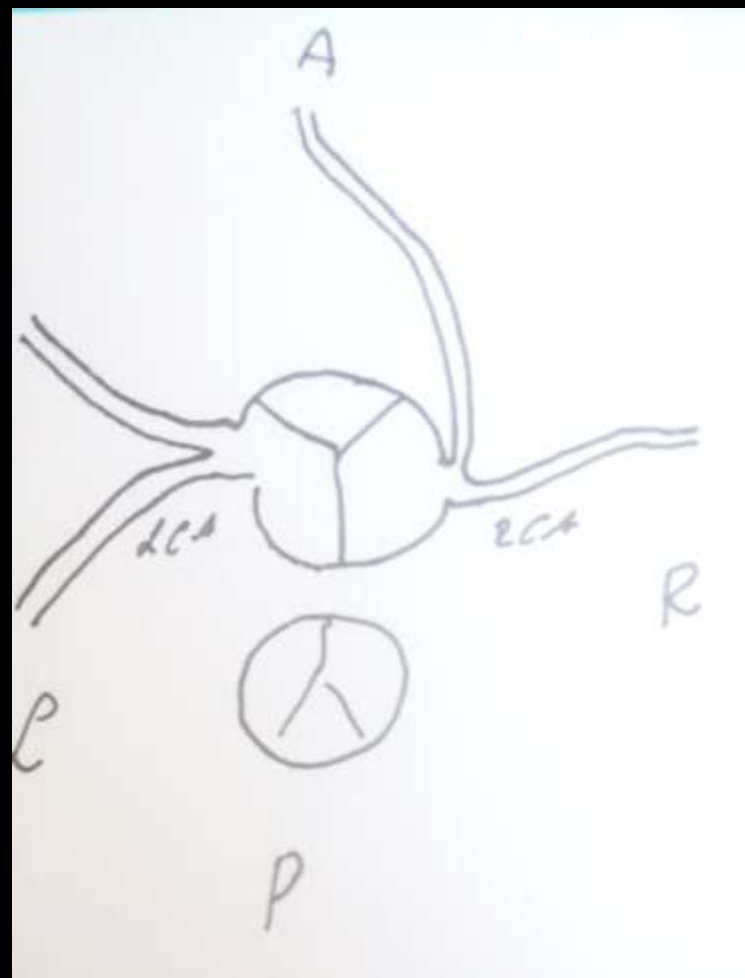
Department of Pediatric Cardiac Surgery  
Jagiellonian University, Kraków, Poland



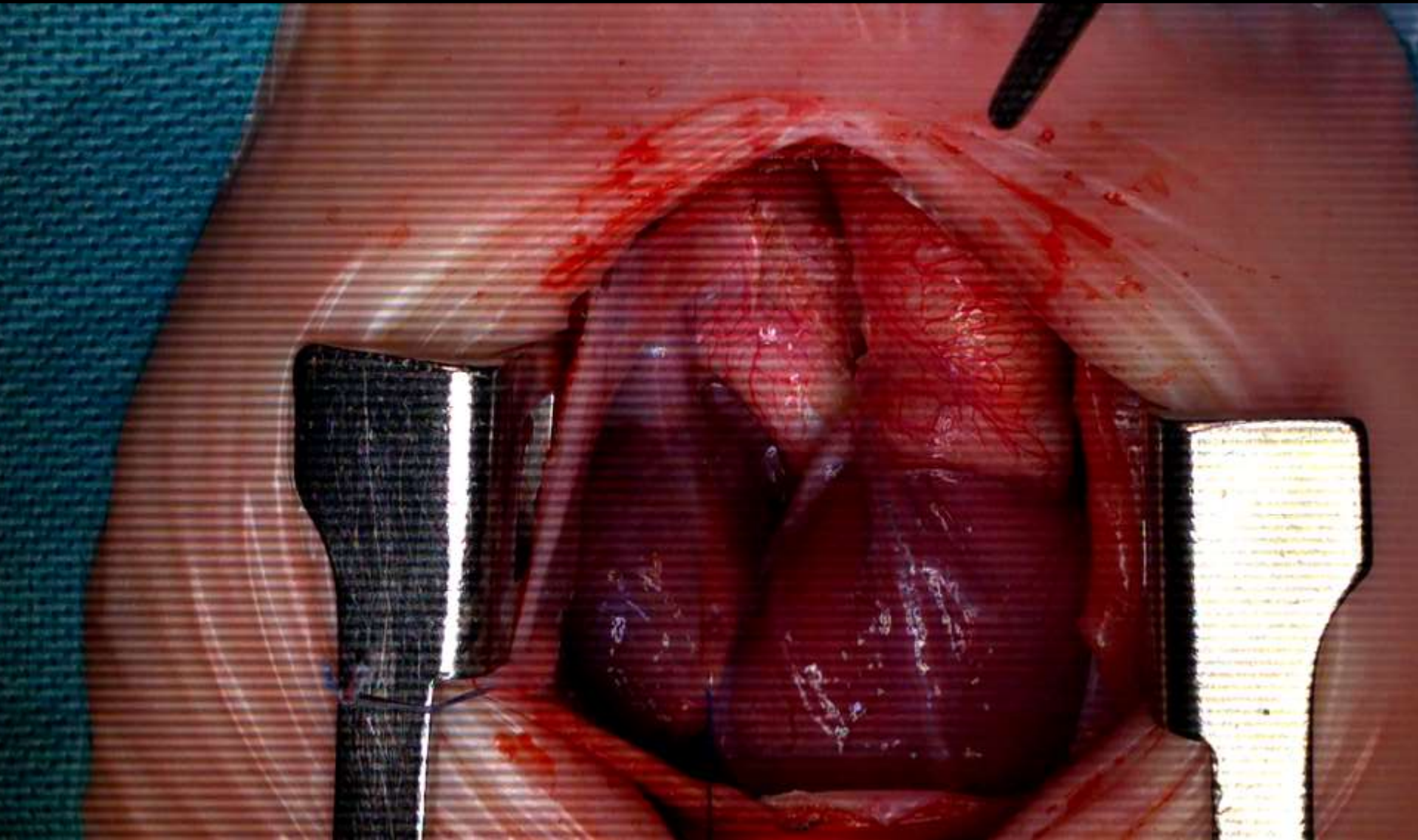


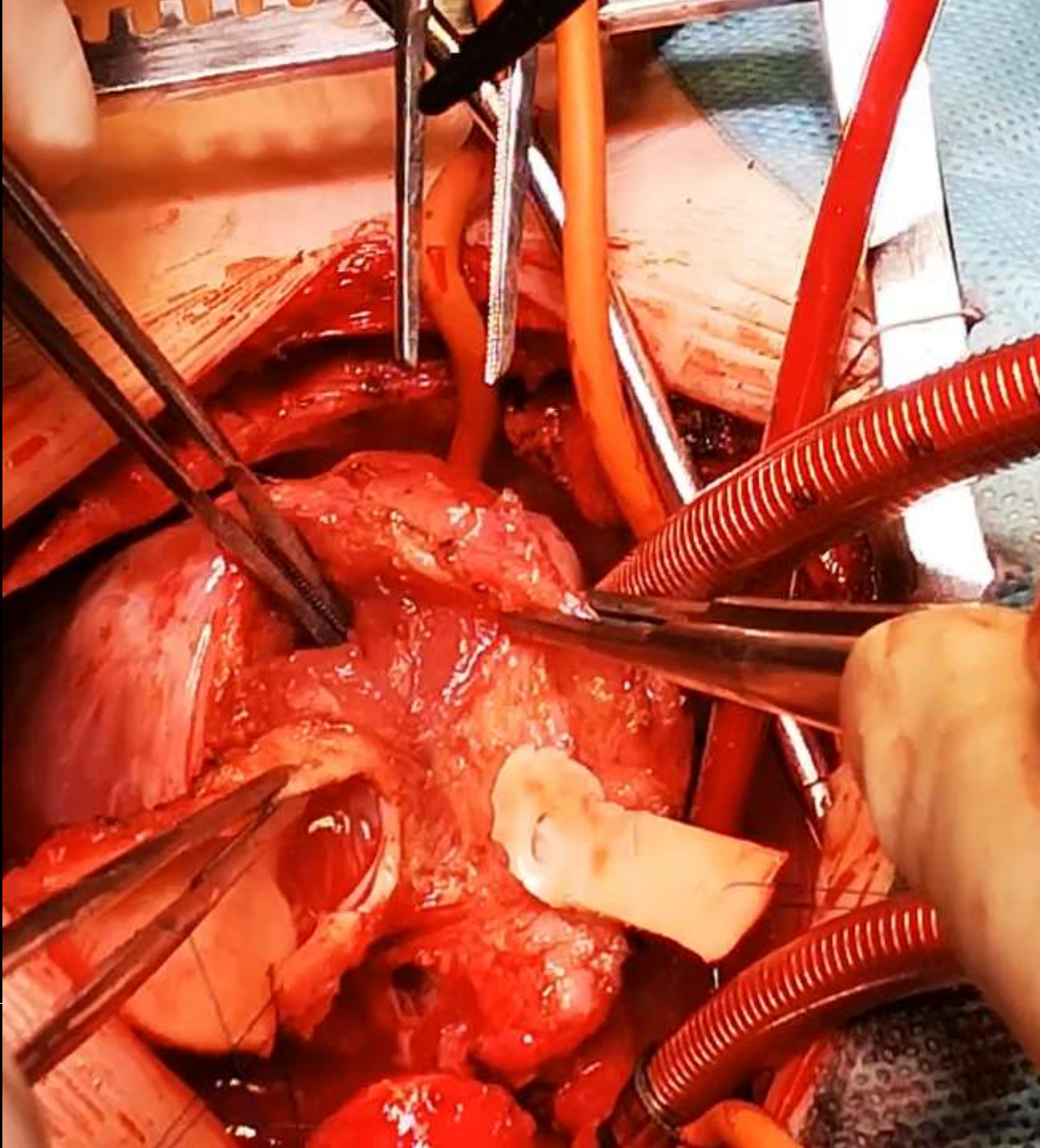


# Case I



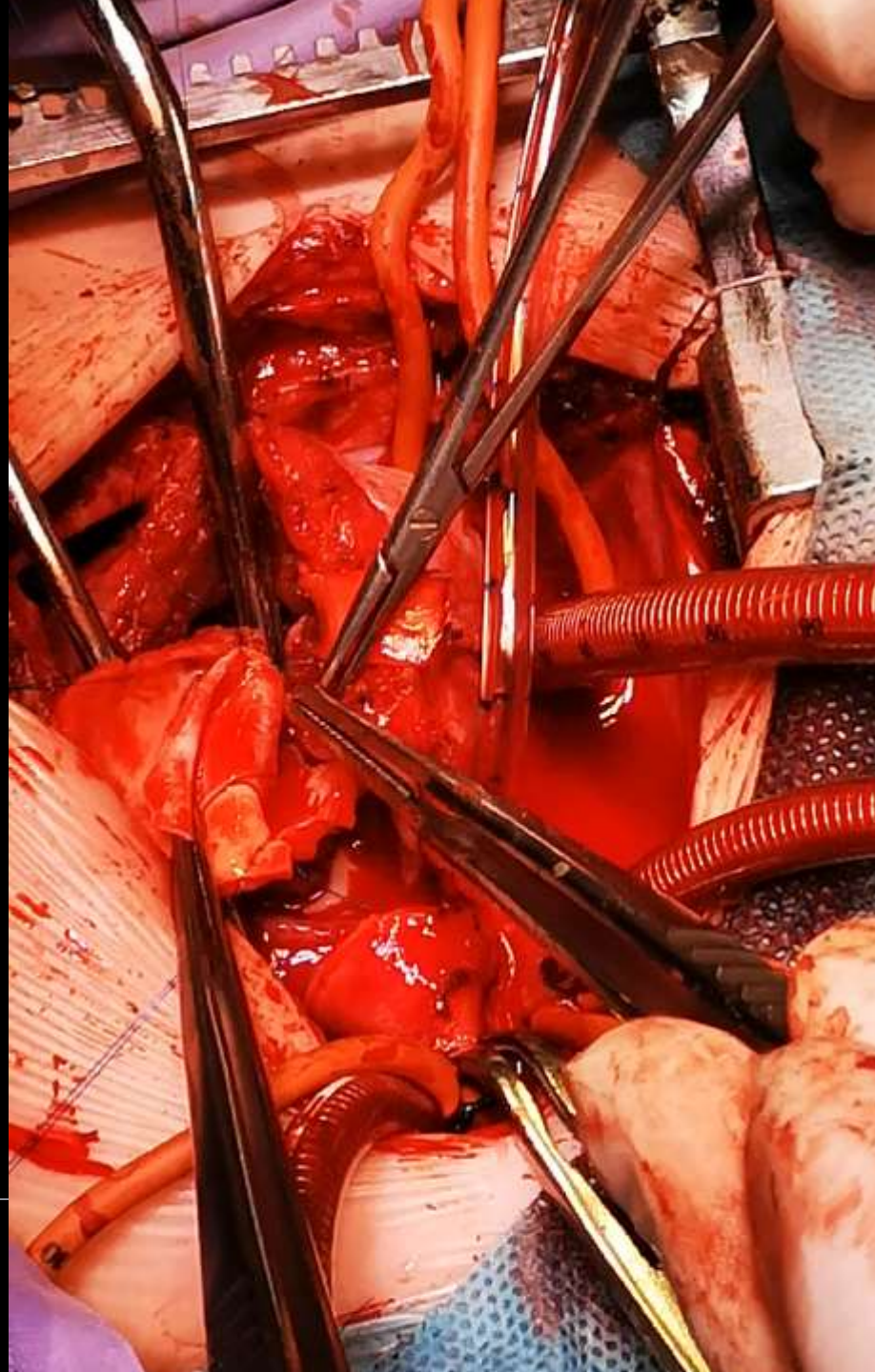




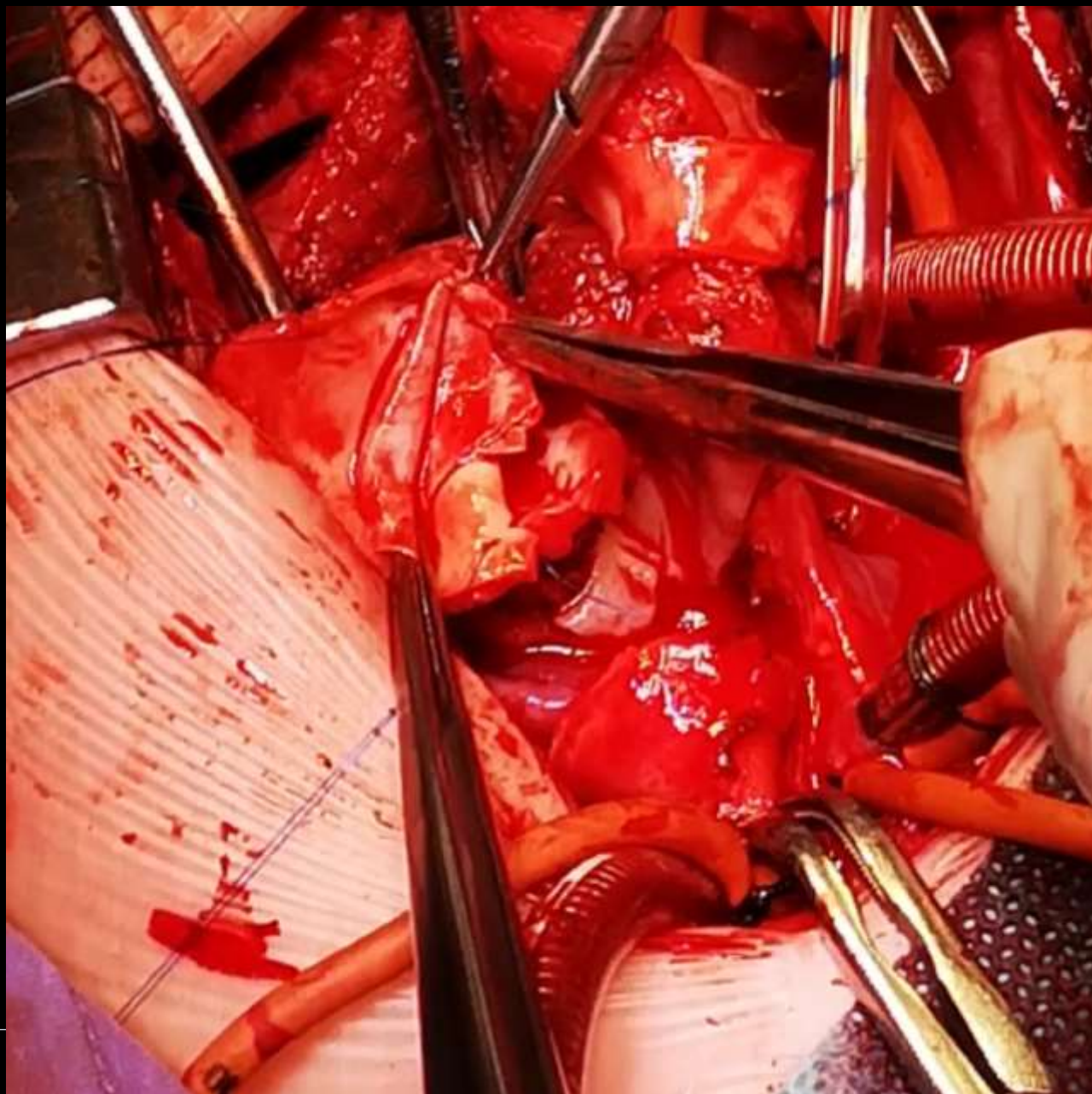












FR 17Hz  
9.0cm

2D  
78%  
C 50  
P Off  
Res  
CF  
77%  
3.0MHz  
WF High  
Med

M3 M4  
+61.6



-61.6  
cm/s

F# 10

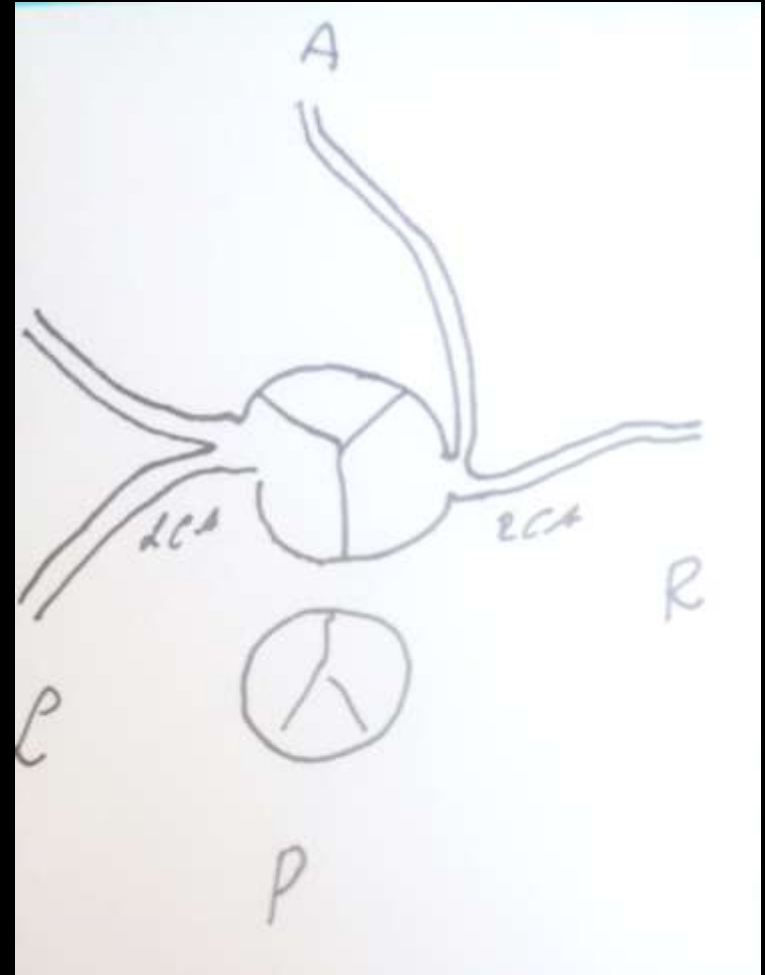
21

Dist 1.26 cm  
2019-09-20 11:37



## Case I

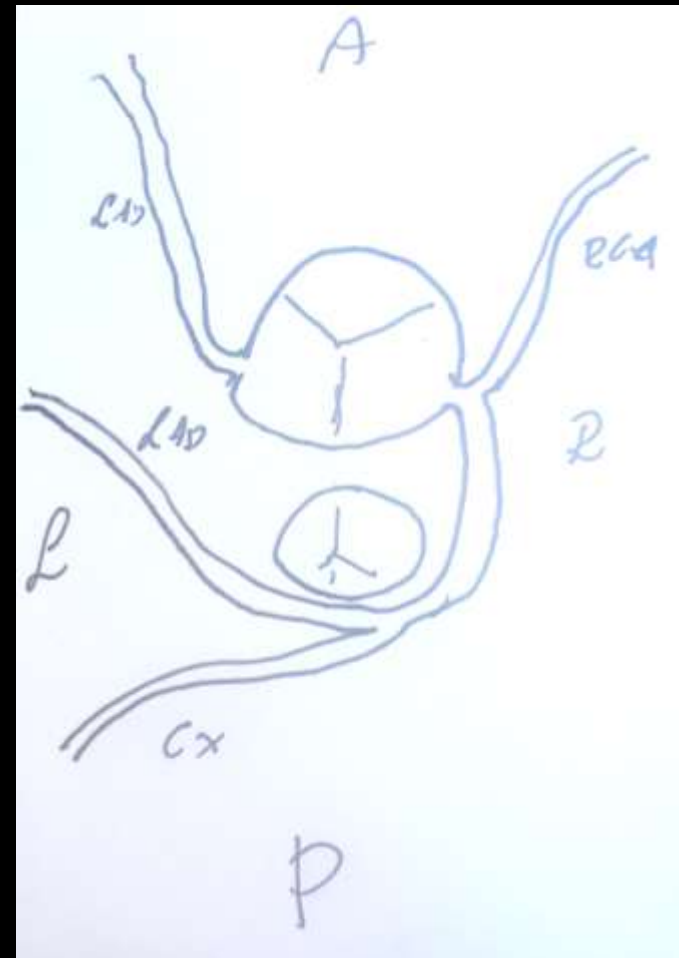
Coronary arteries were harvested and reimplanted with patch augmentation of RCA ostium

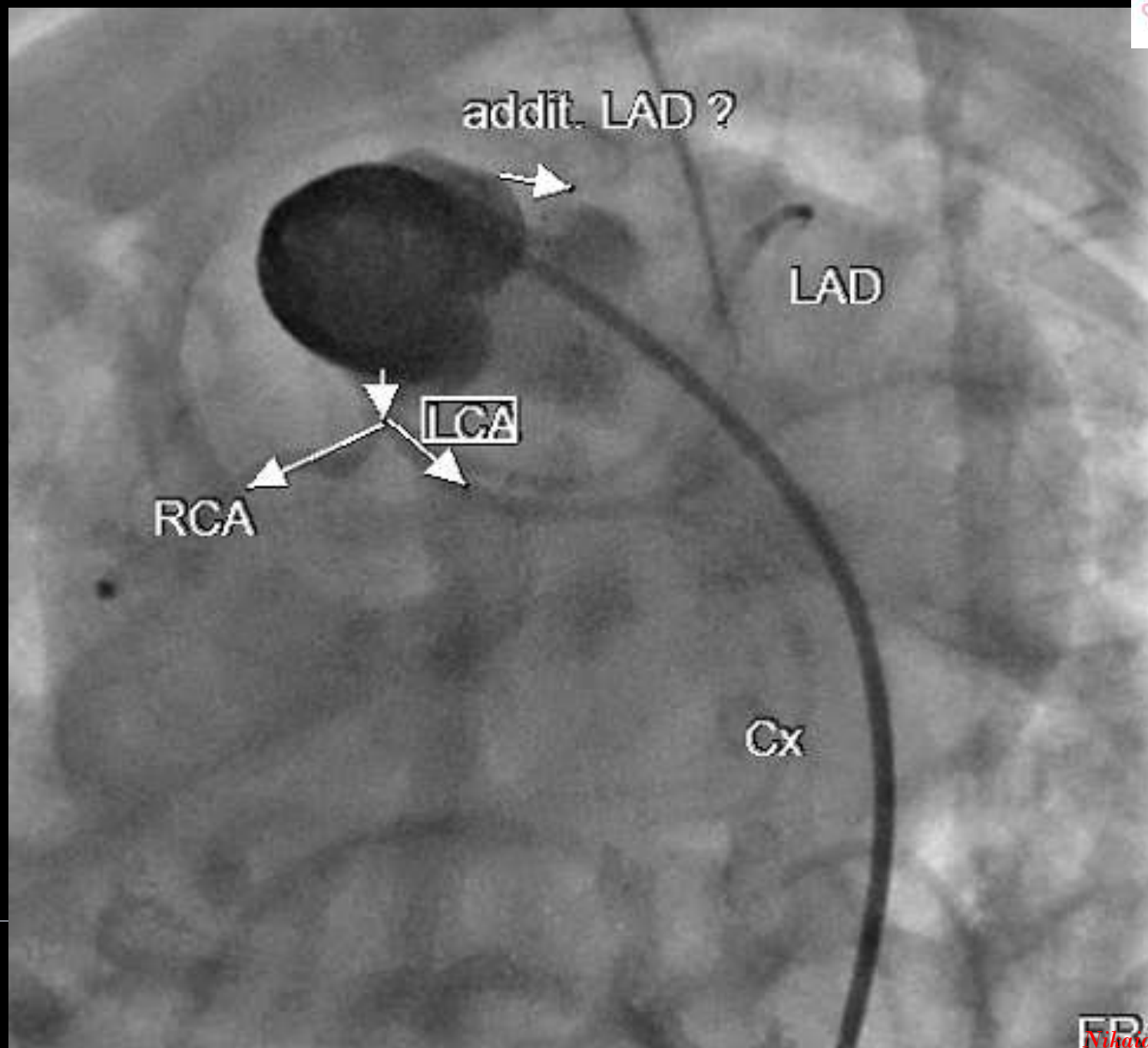


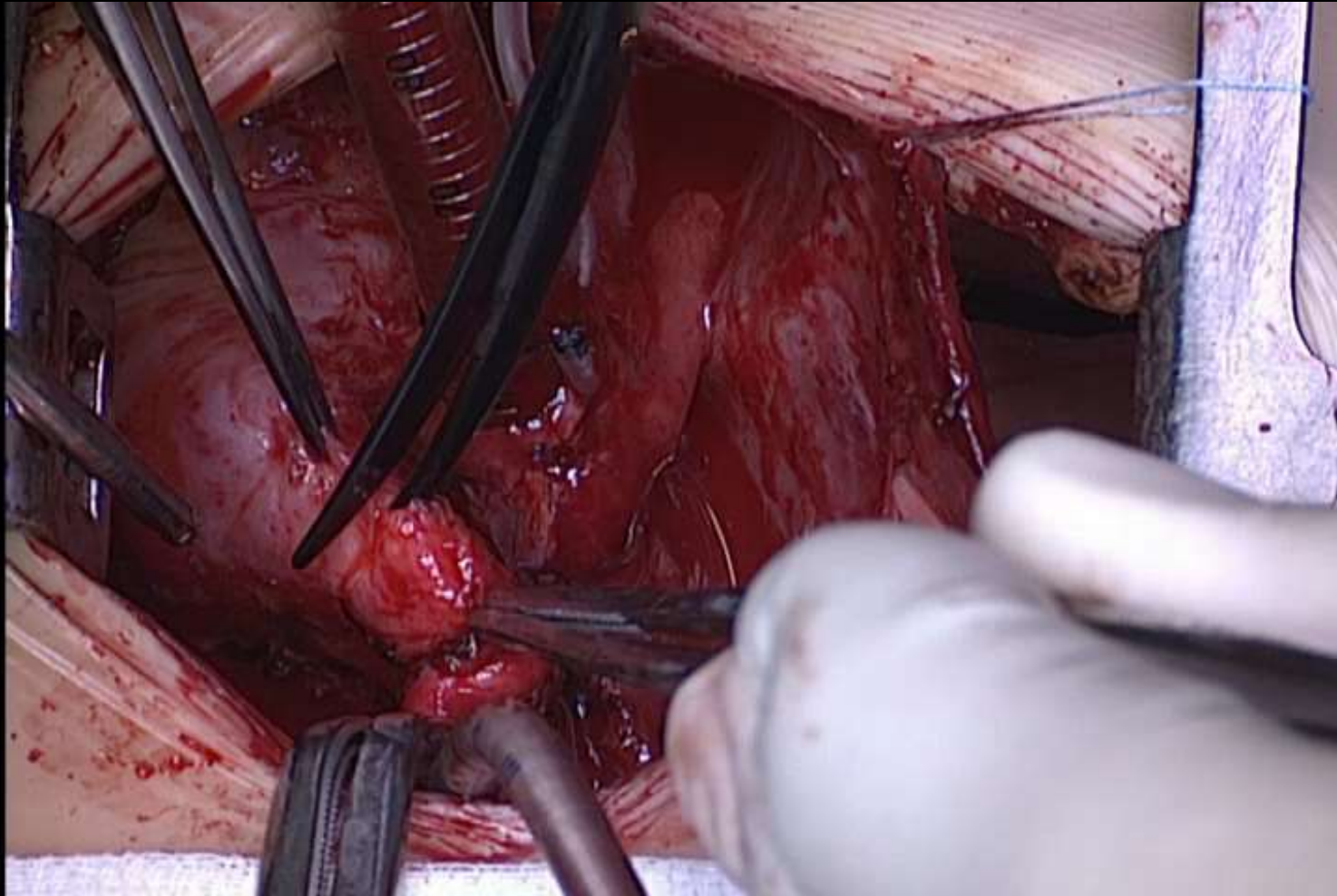




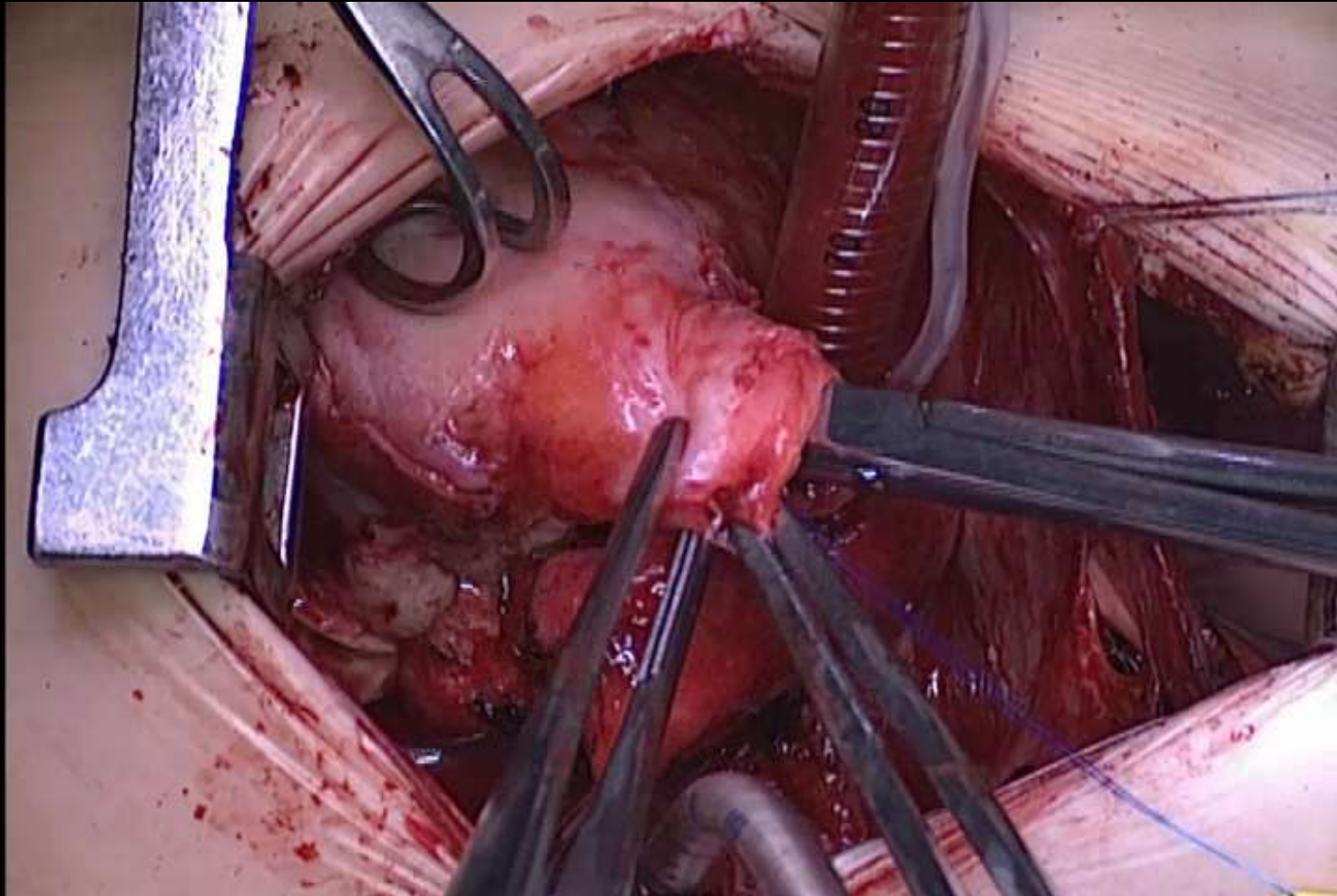
## Case II

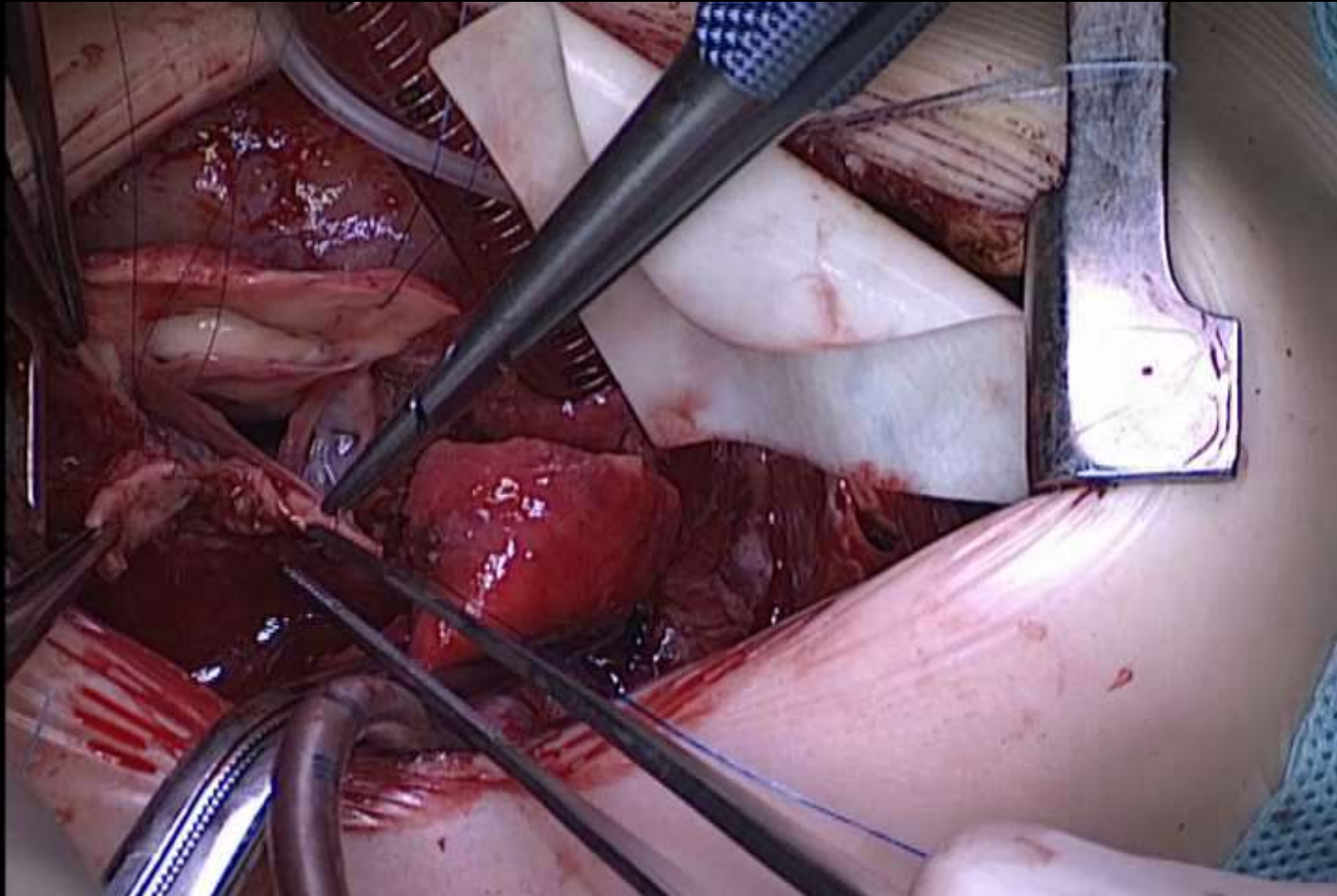




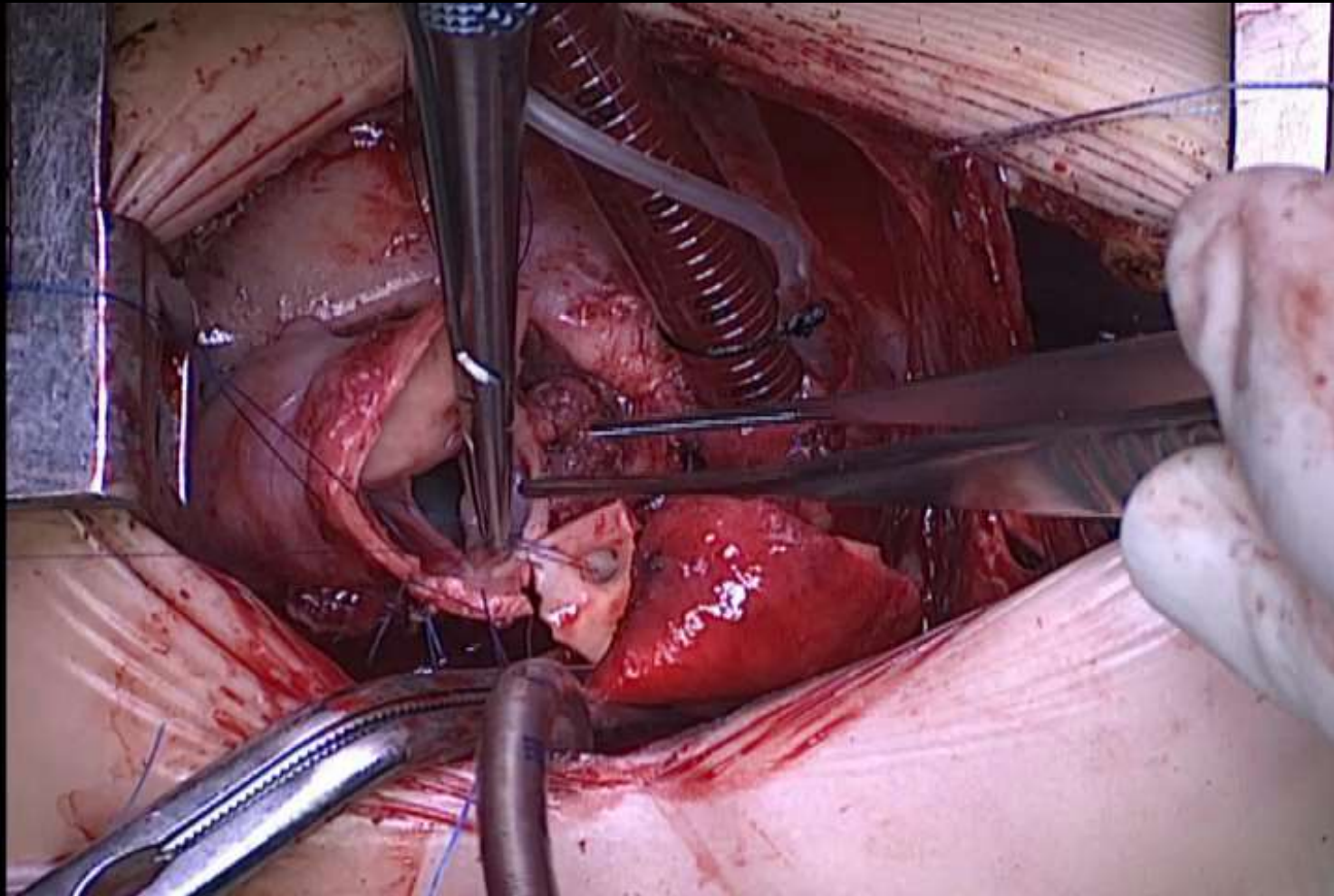




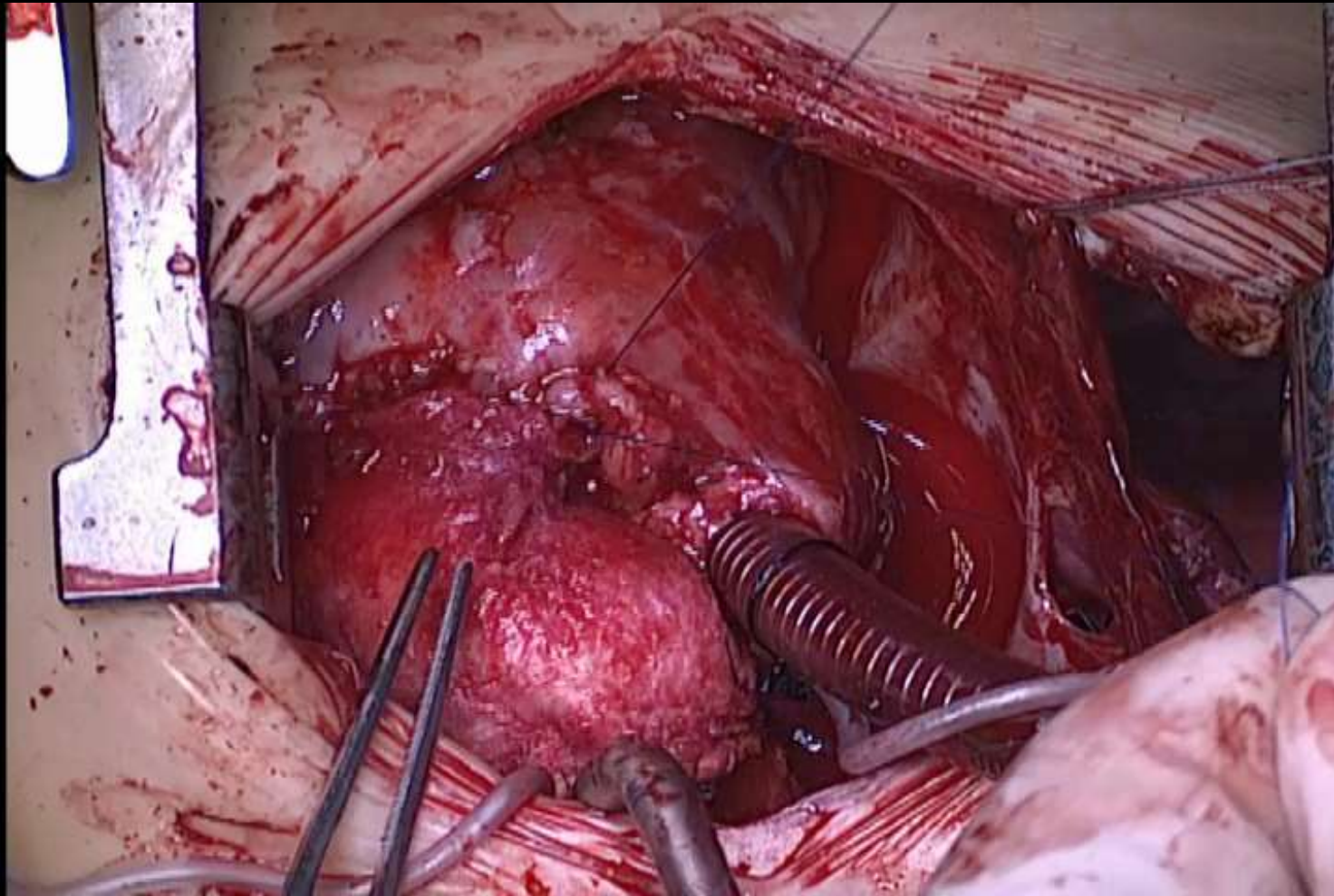








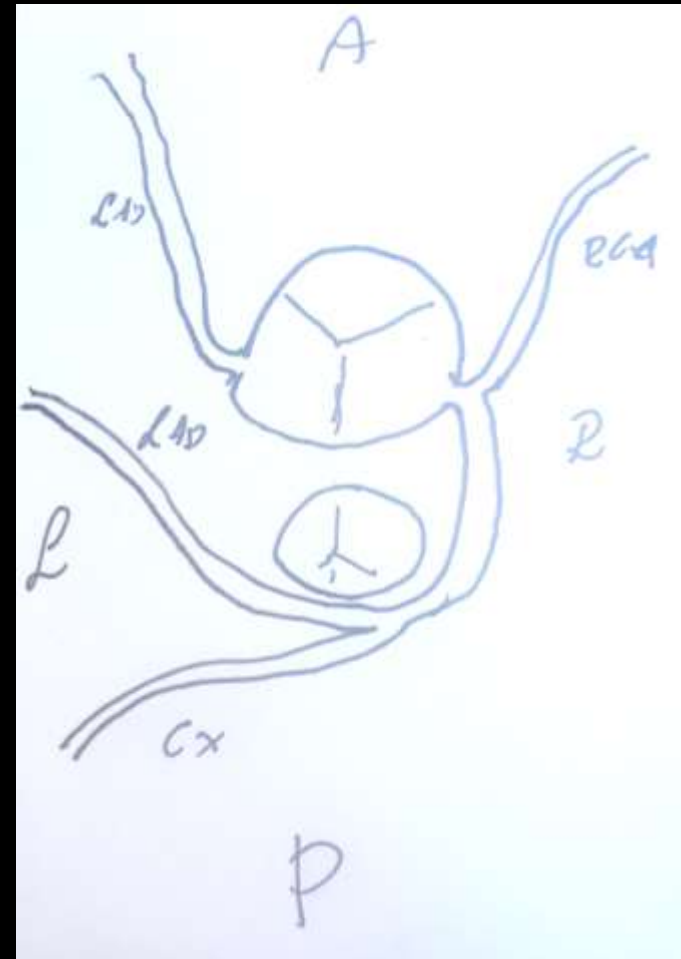






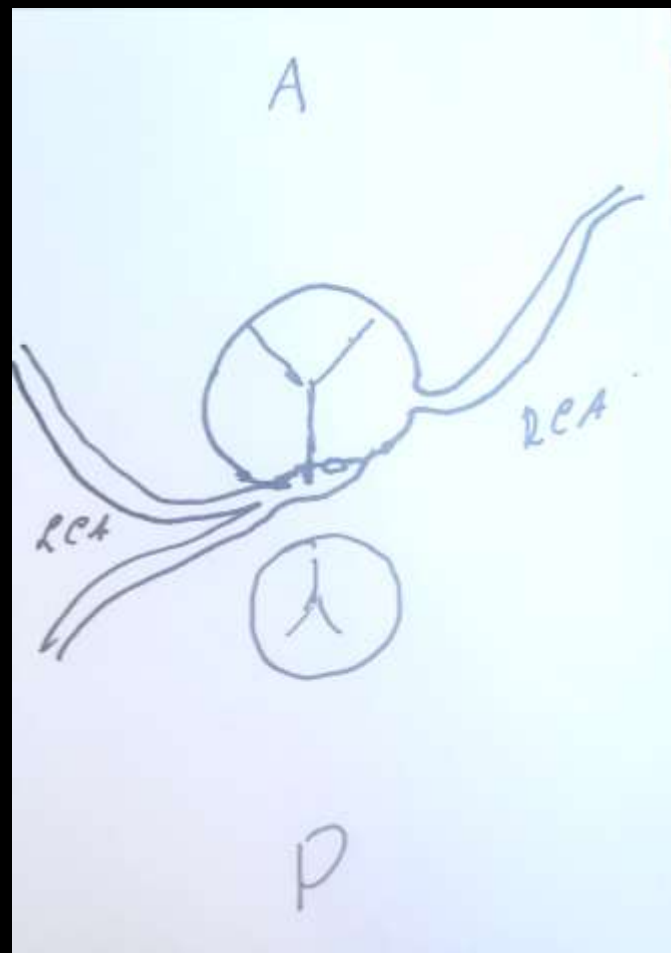
## Case II

Coronary arteries were harvested and reimplanted, with some rotation of autograft



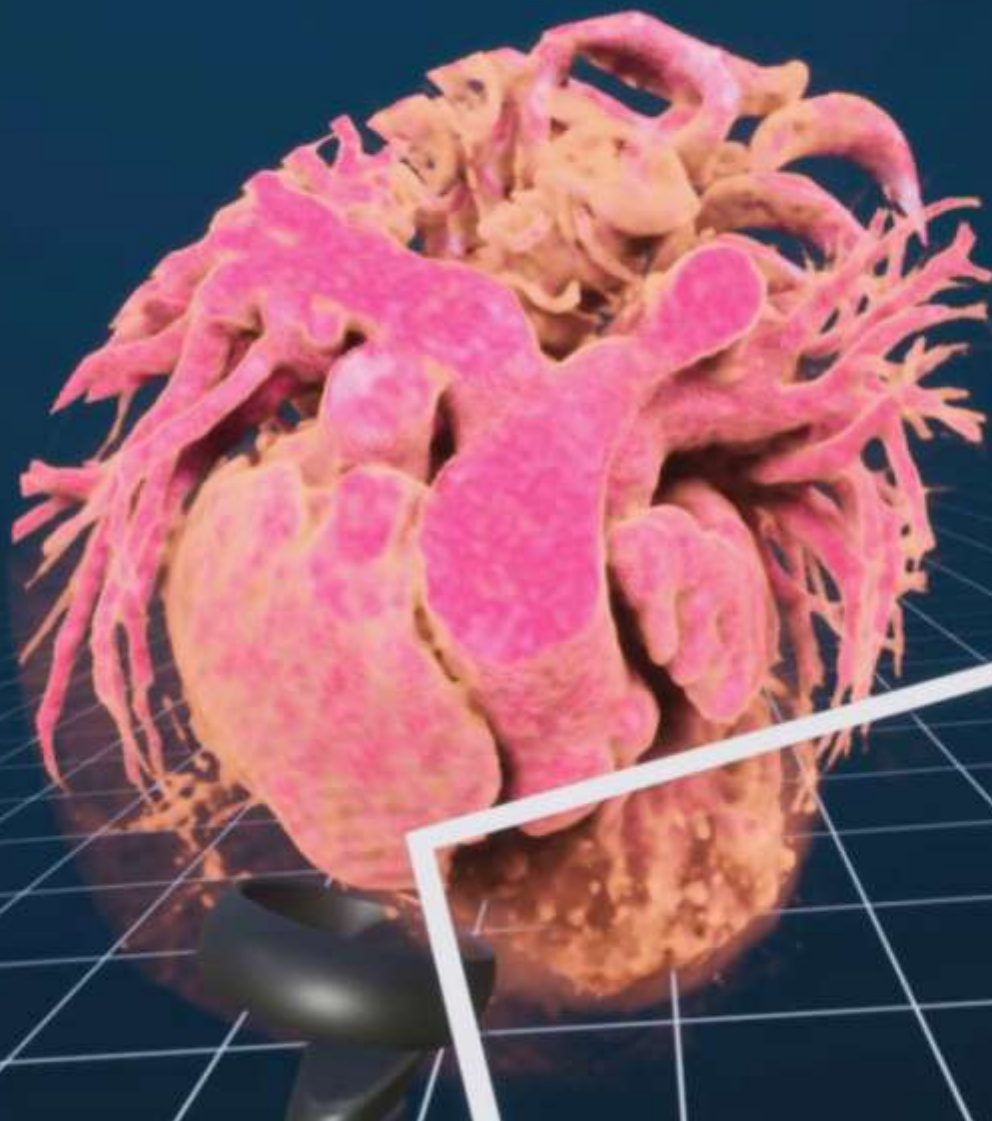


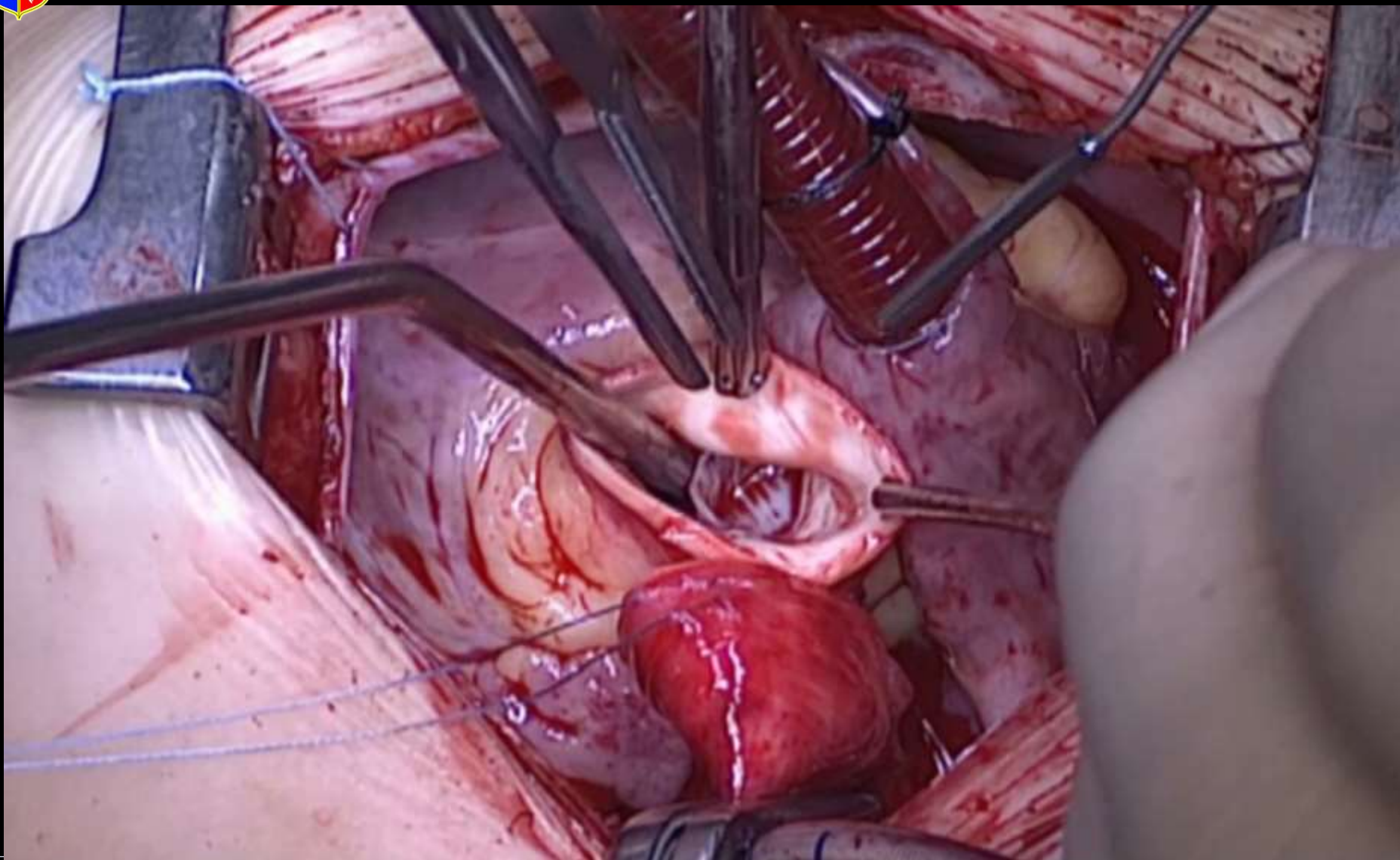
## Case III







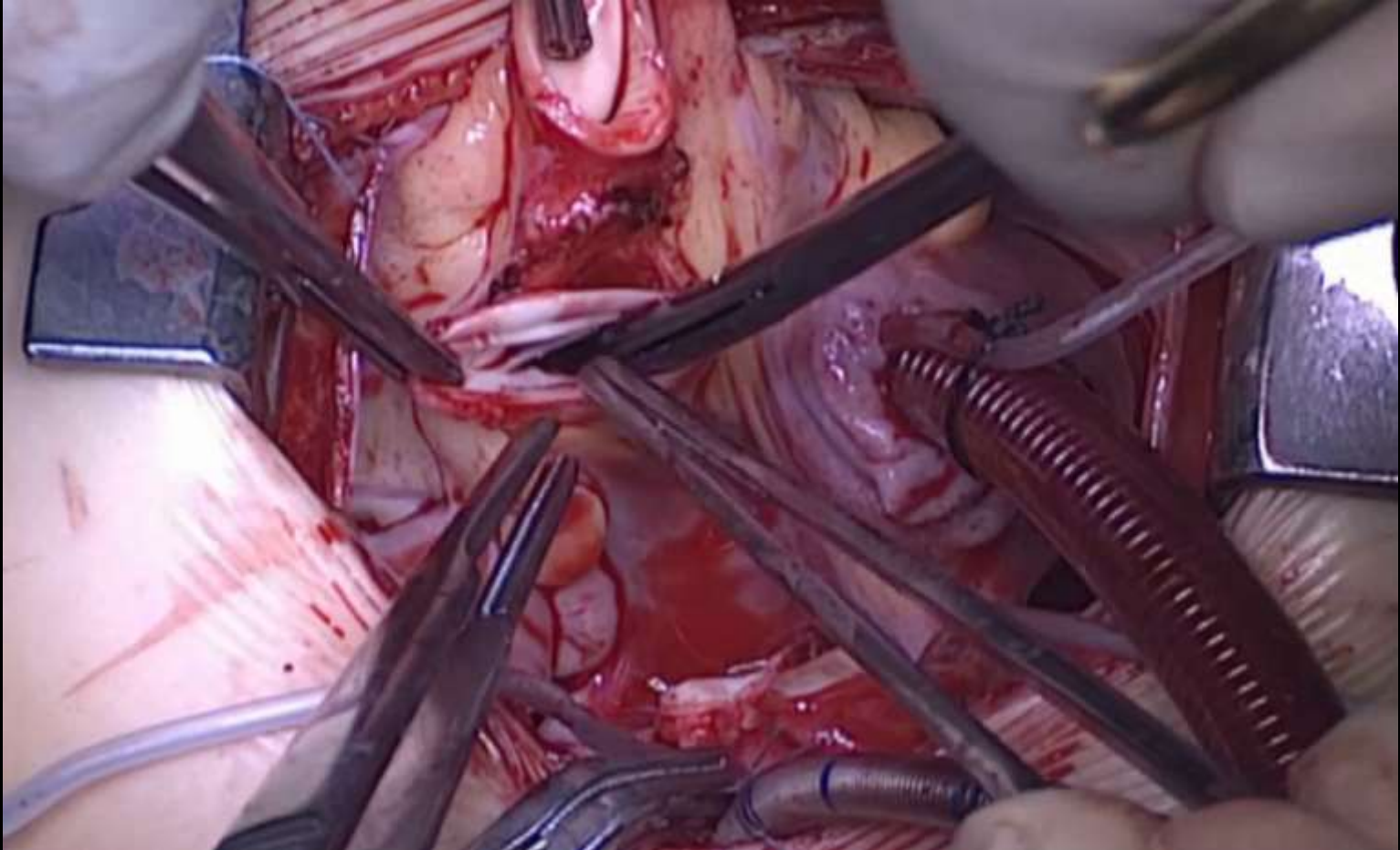


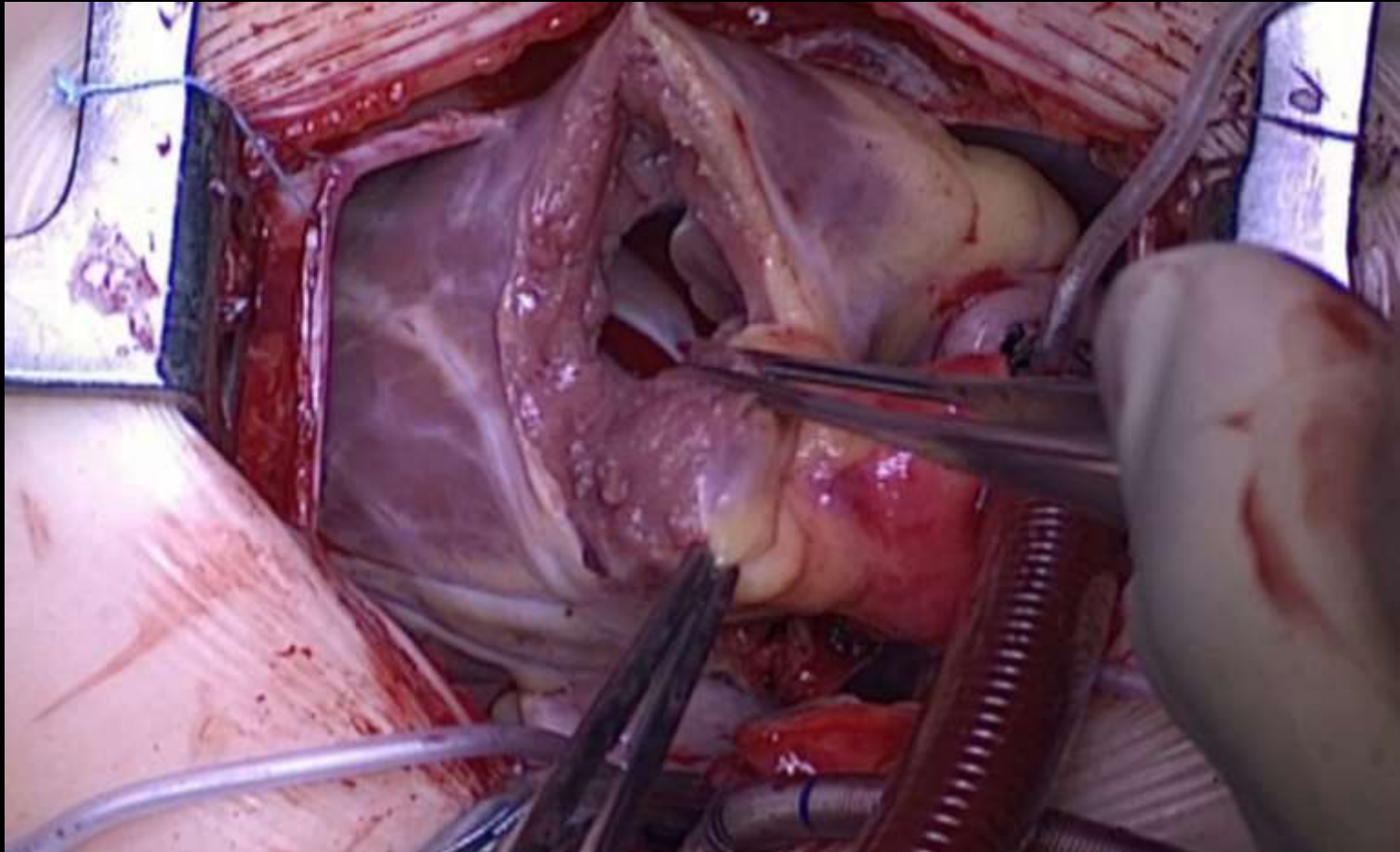




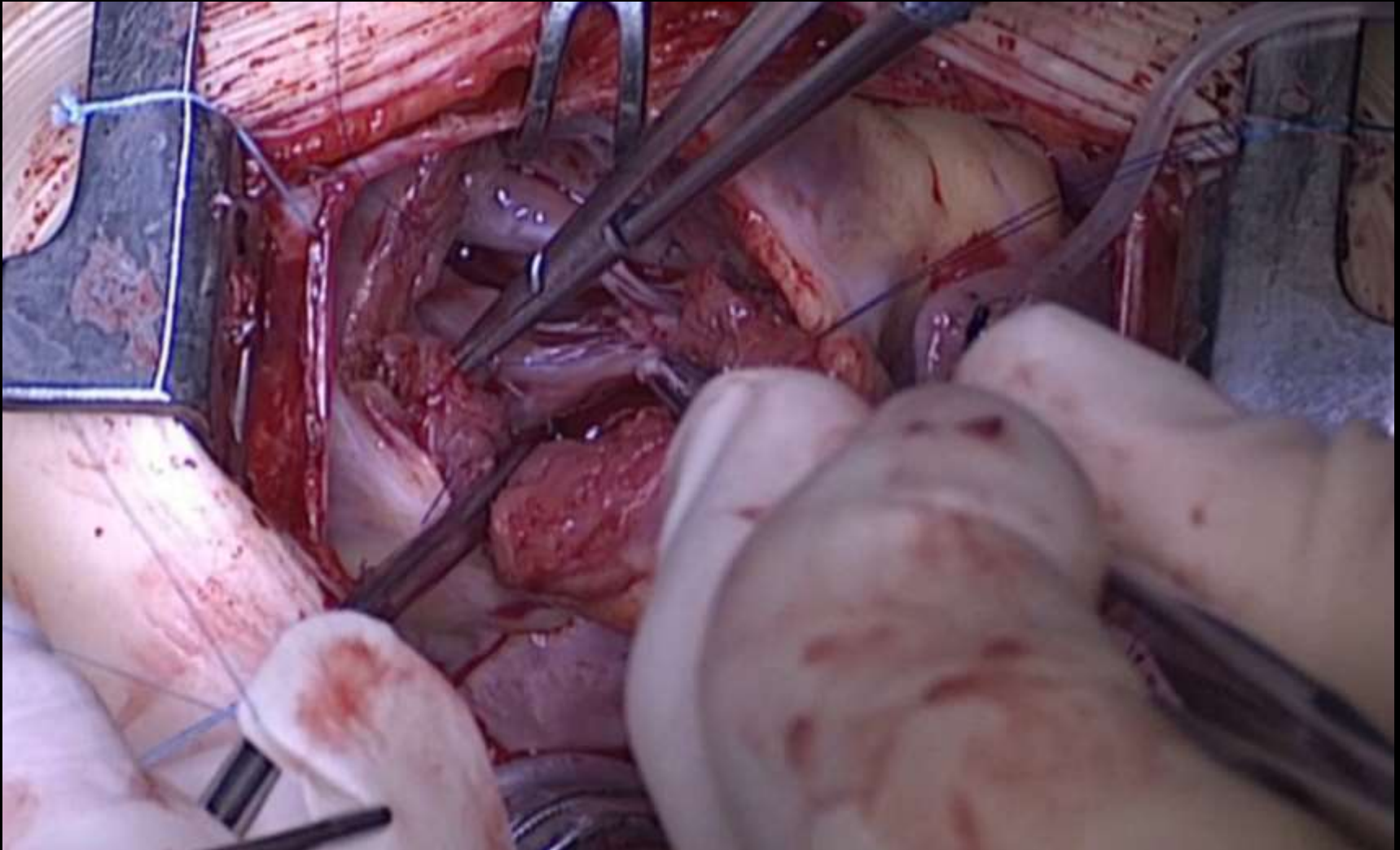


# What next ?







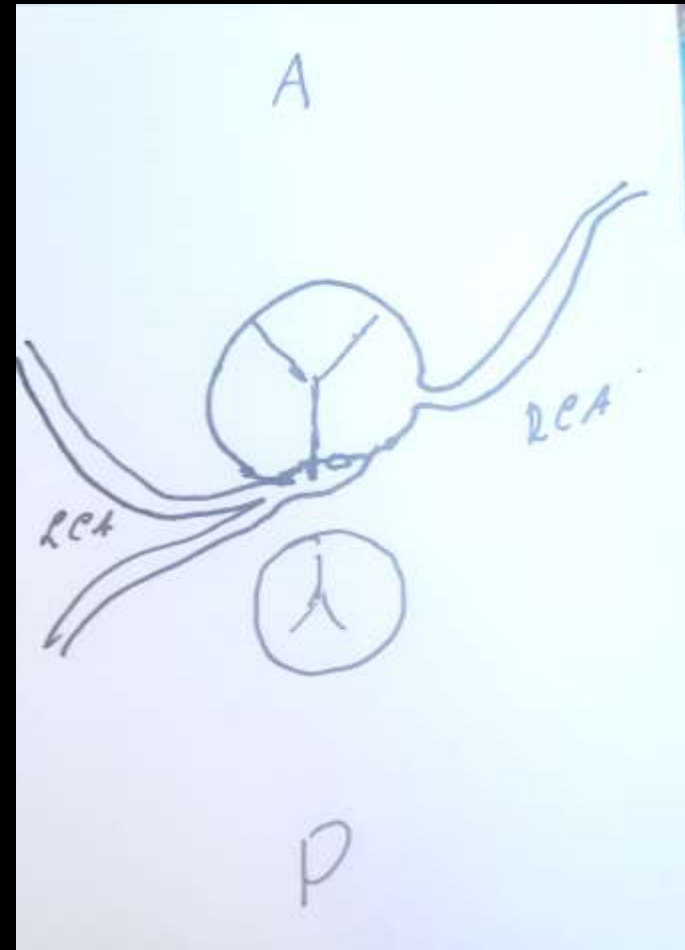






## Case III

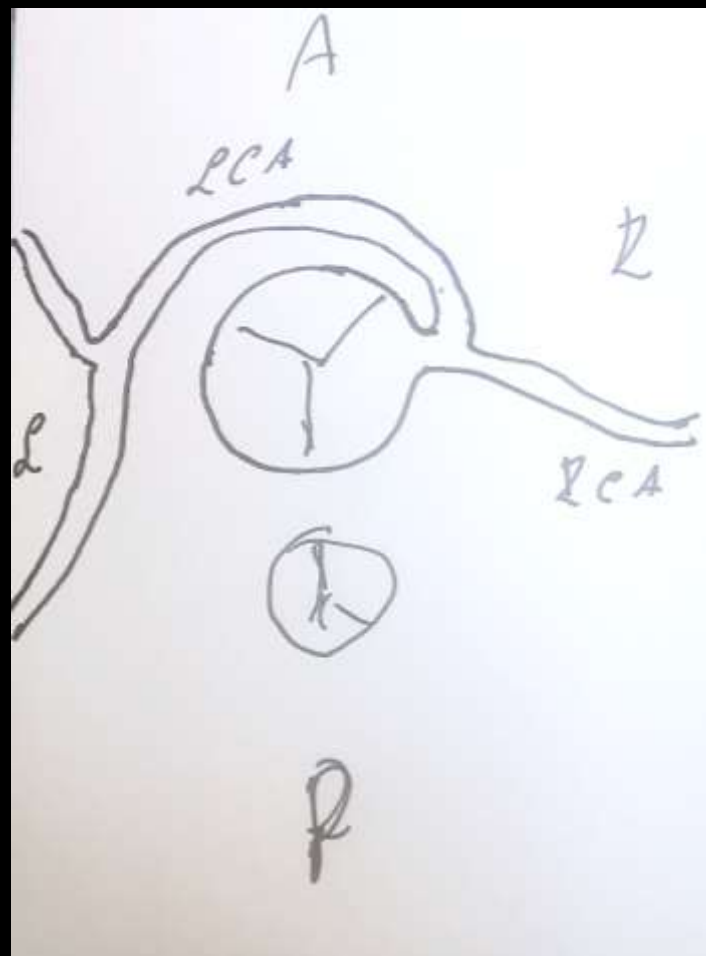
**Coronary arteries  
remained untouched,  
but extensive  
mobilization of aortic  
valve**

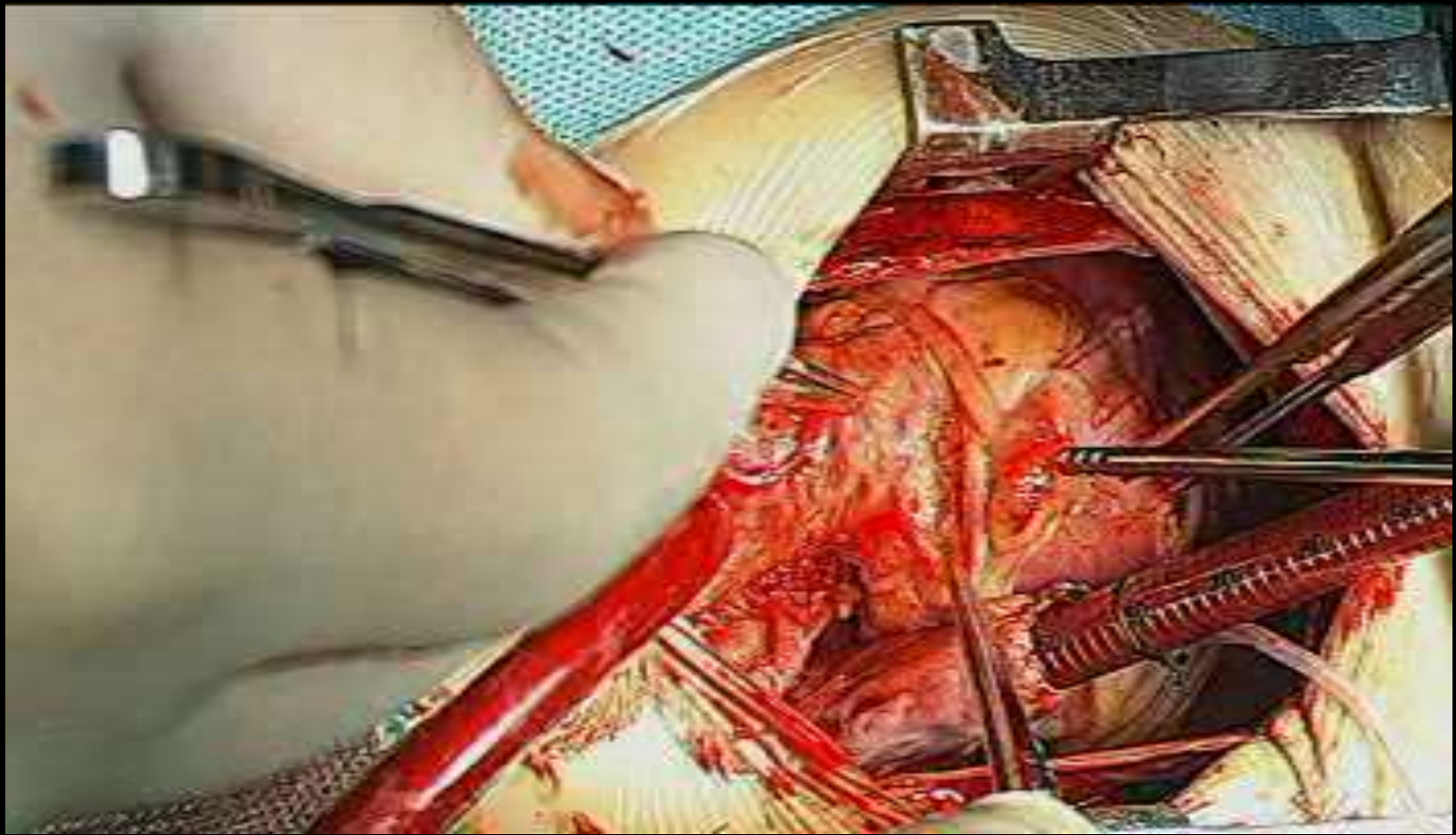


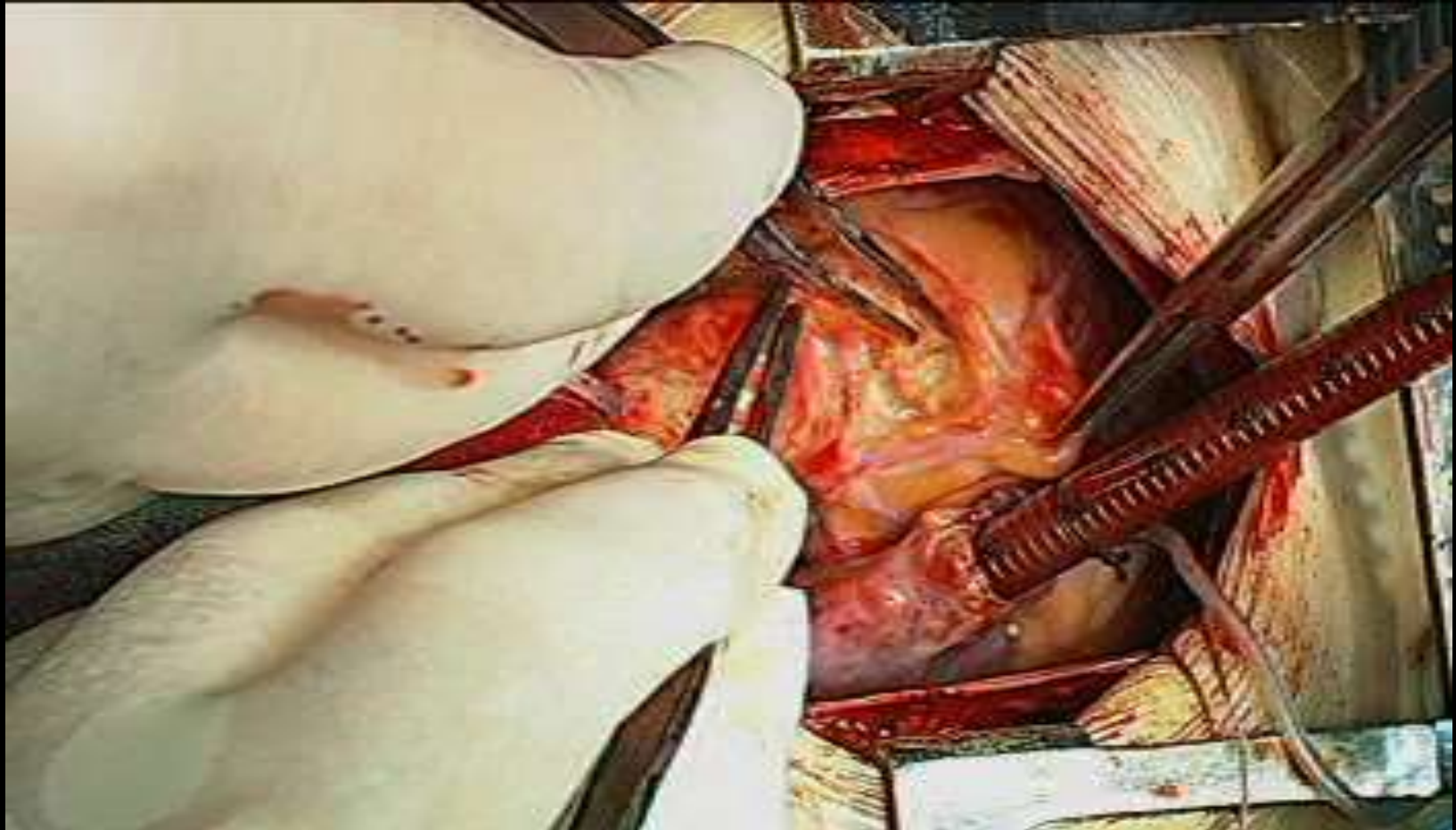




## Case IV

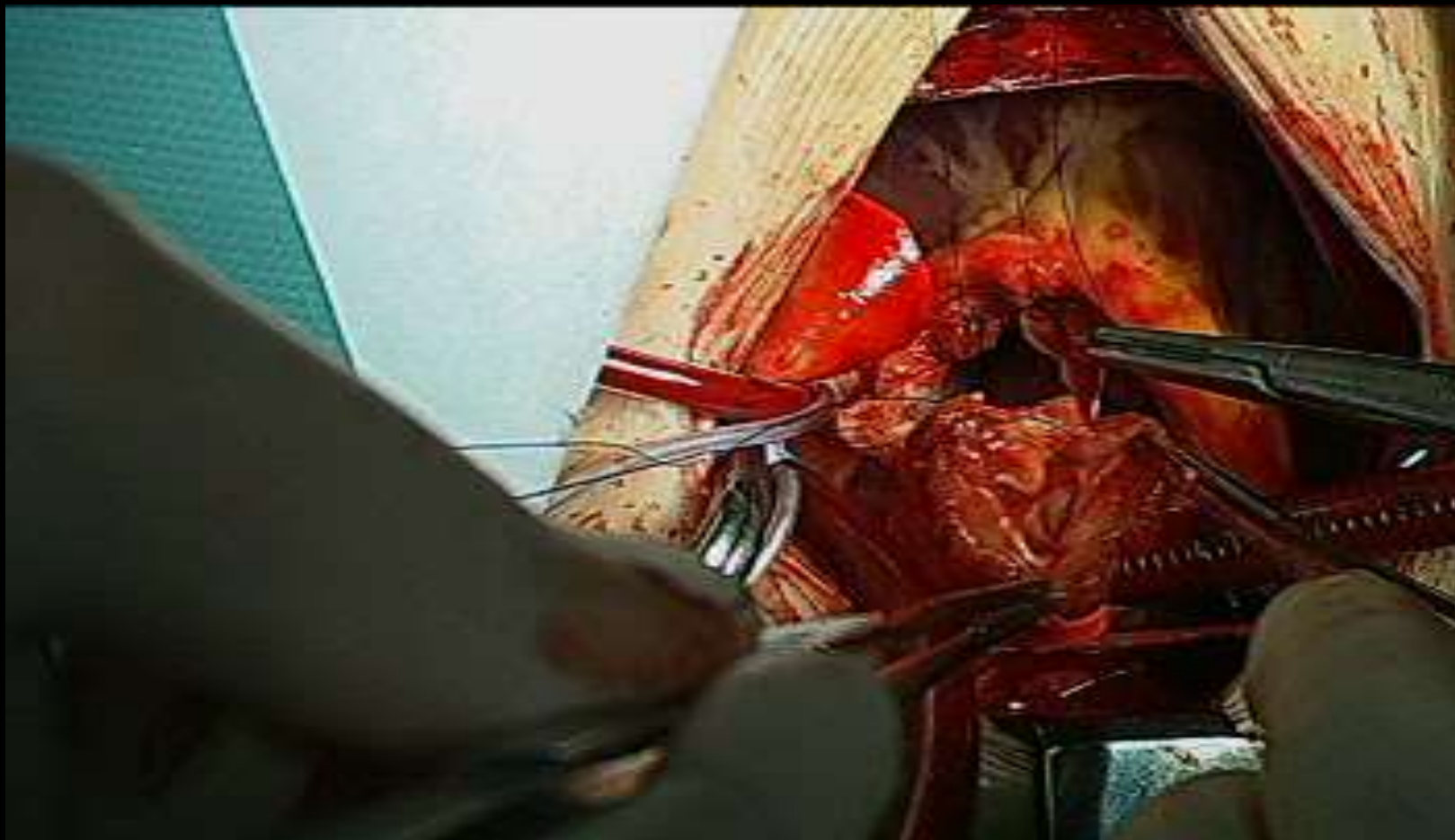


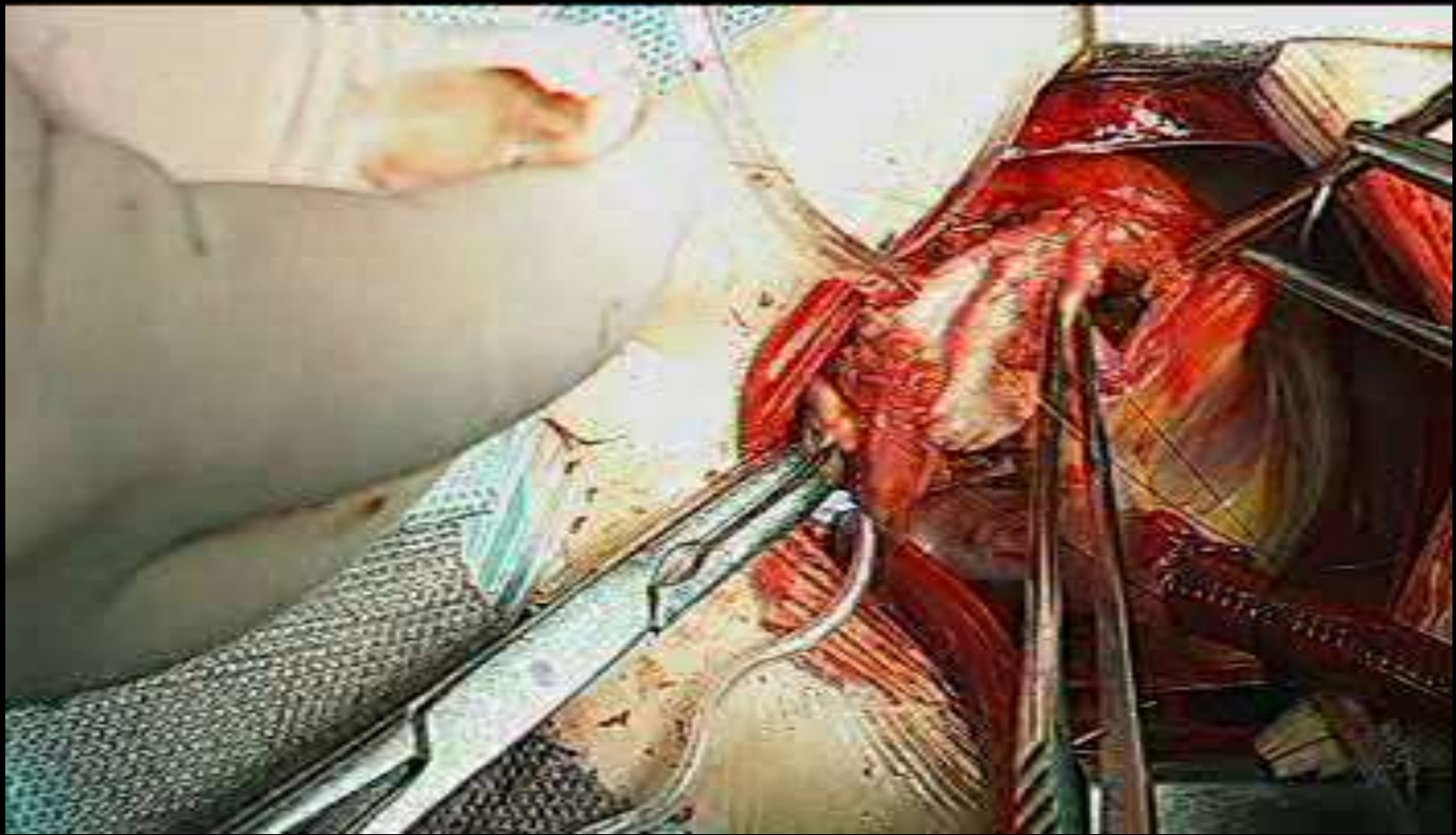










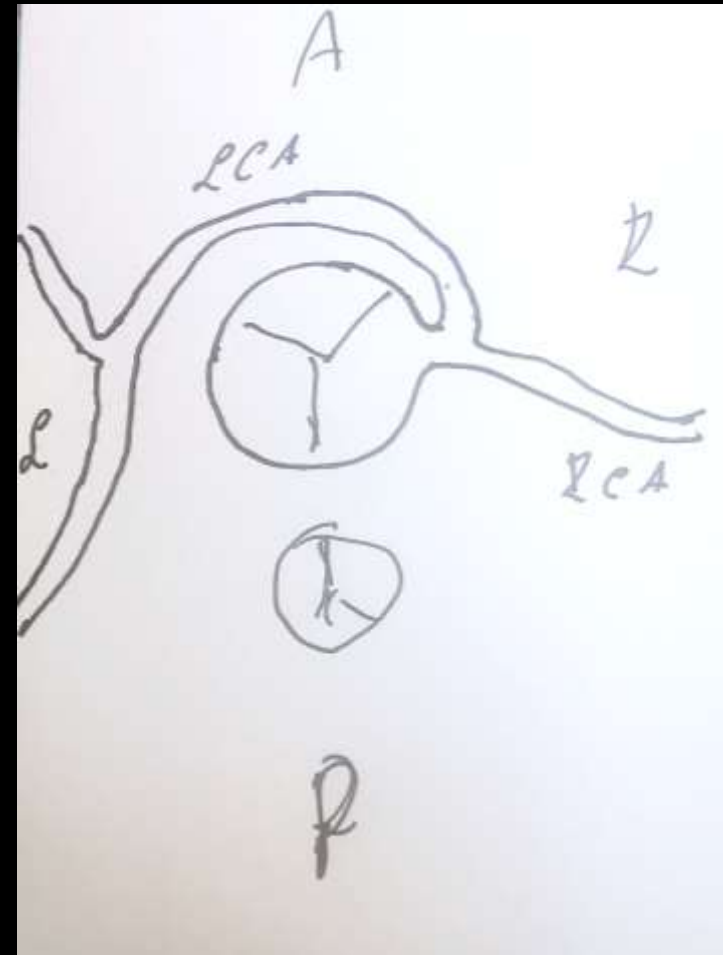






## Case IV

**Coronary arteries  
remained untouched  
with rotation of aortic  
autograft**







NCHO222  
United States - US Air Force (USAF) flighttracker24

Worldwide Tracked by 15,824



Chris Andrew Barker

MHZ  N/A

MILDENHALL  
GMT (UTC 00:00)

ACTUAL 16:26 ESTIMATED

Ads by Google

Stop seeing this ad

Why this ad? 

AIRCRAFT TYPE (DC10)

McDonnell Douglas KC-10A Extender









**LAGR130**  
United States - US Air Force (USAF) flightradar24


#2 Worldwide Tracked by 9,012 LIVE




© John Ballantyne

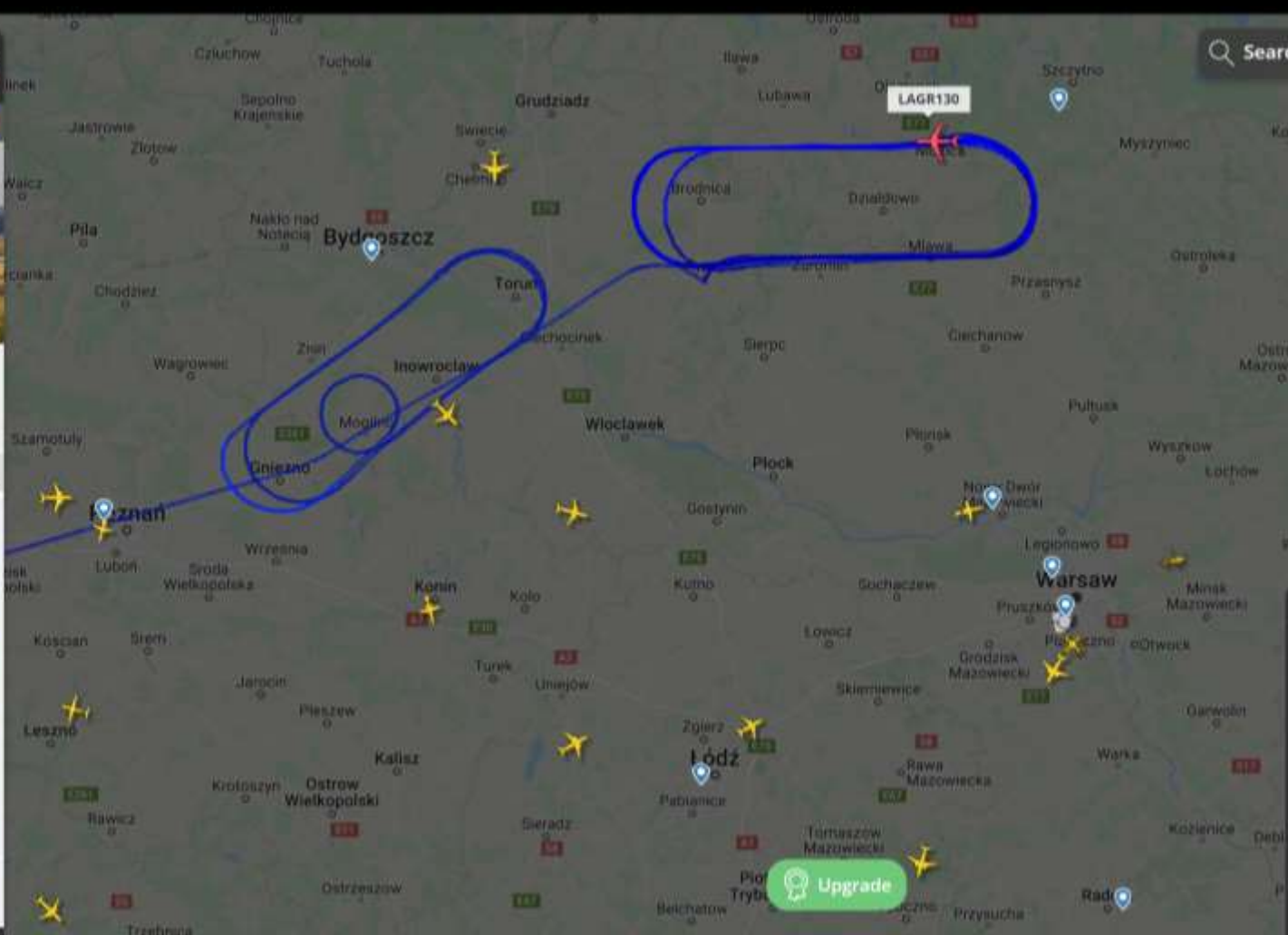
**RMS**  **N/A**  
RAMSTEIN  
CET (UTC +01:00)

ACTUAL 18:09 ESTIMATED



**DES HORECA-SEKTORS.**

 AIRCRAFT TYPE (K35R)  
Boeing KC-135R Stratotanker





RRR6754

Royal Air Force (RAF)



#2 Worldwide

Tracked by 10,228



© R.Rimestad

BZZ



N/A

BRIZE NORTON

GMT (UTC 00:00)

ACTUAL

19:47

ESTIMATED

Locate  
leads with  
sophisticated  
search filters.

**Sales Navigator**

[Learn more](#)



AIRCRAFT TYPE (C17)

Boeing C-17A Globemaster III

